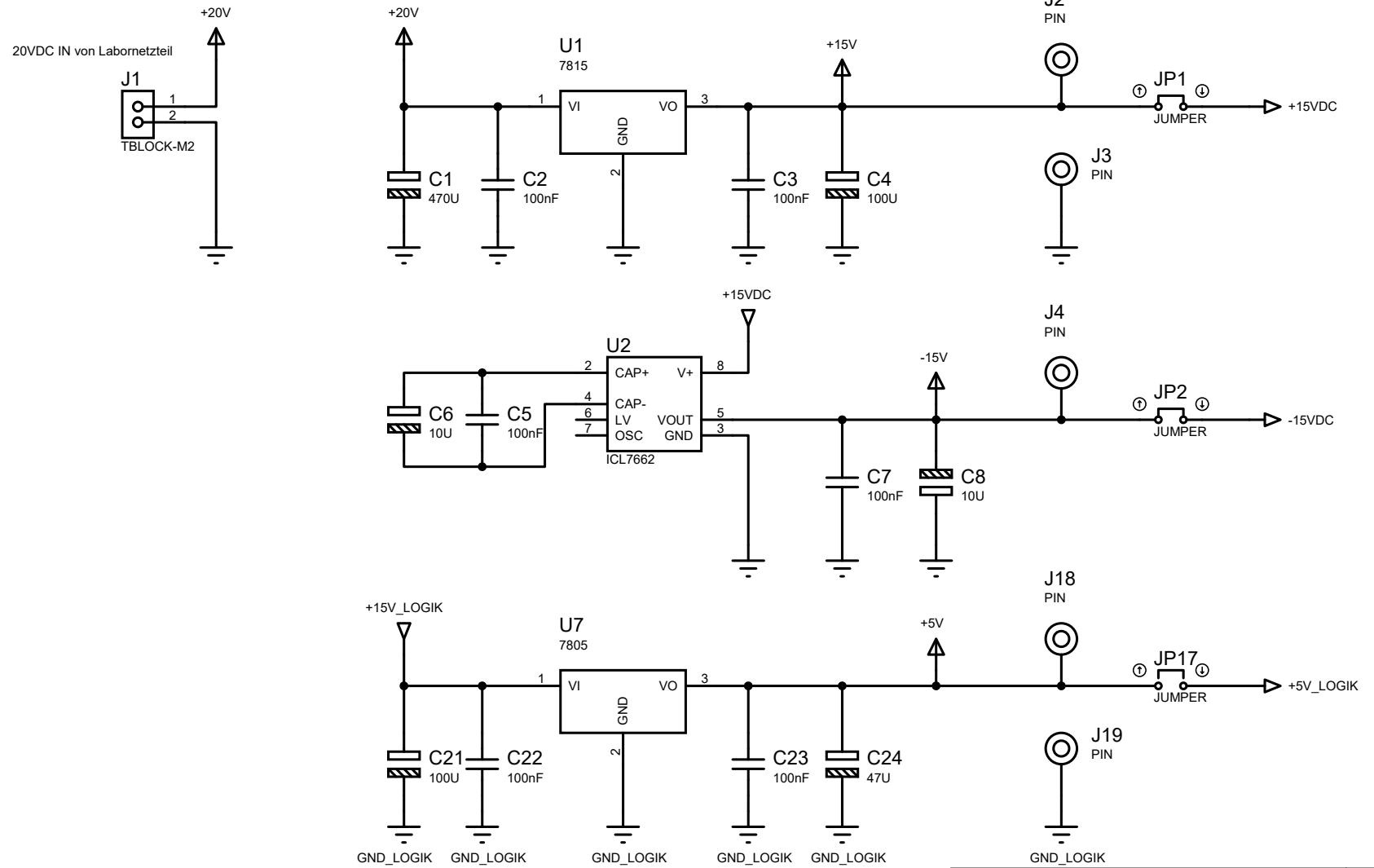
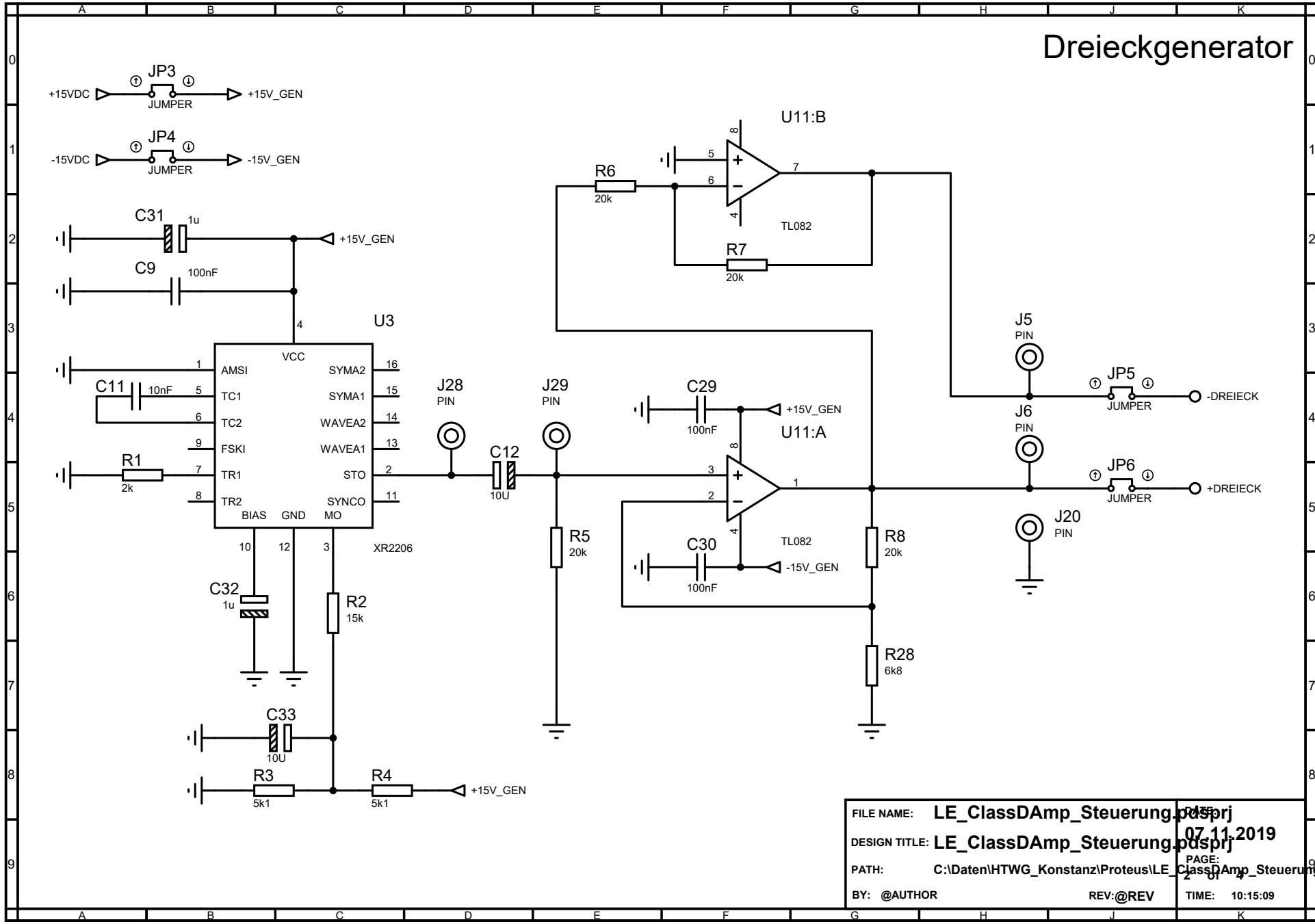


Spannungsversorgung



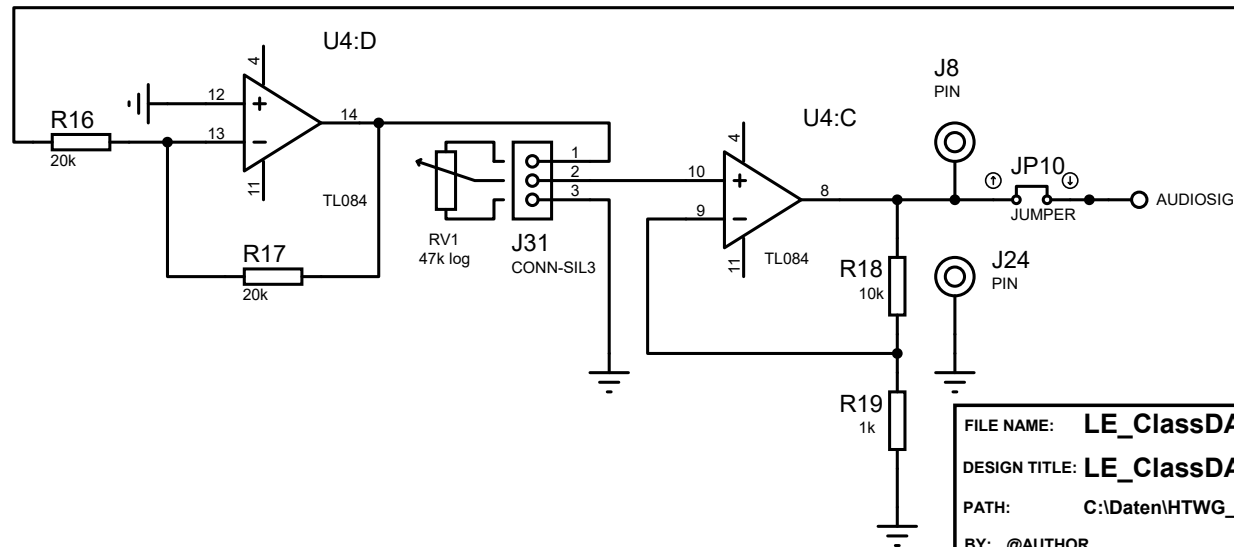
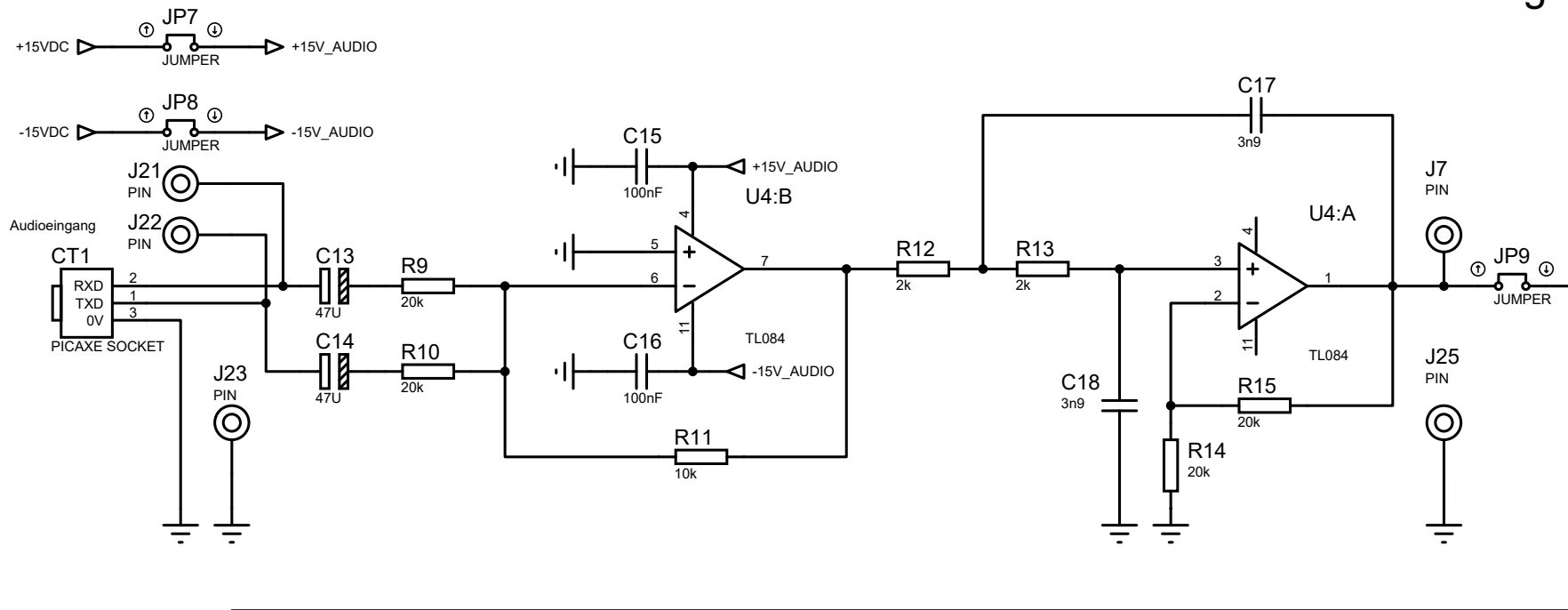
| | | | |
|---------------|---|-------|------------|
| FILE NAME: | LE_ClassDamp_Steuerung.pdsprj | PAGE: | 1 |
| DESIGN TITLE: | LE_ClassDamp_Steuerung.pdsprj | DATE: | 07.11.2019 |
| PATH: | C:\Daten\HTWG_Konstanz\Proteus\LE_ClassDamp_Steuerung | TIME: | 10:15:09 |
| BY: | @AUTHOR | REV: | @REV |

Dreieckgenerator



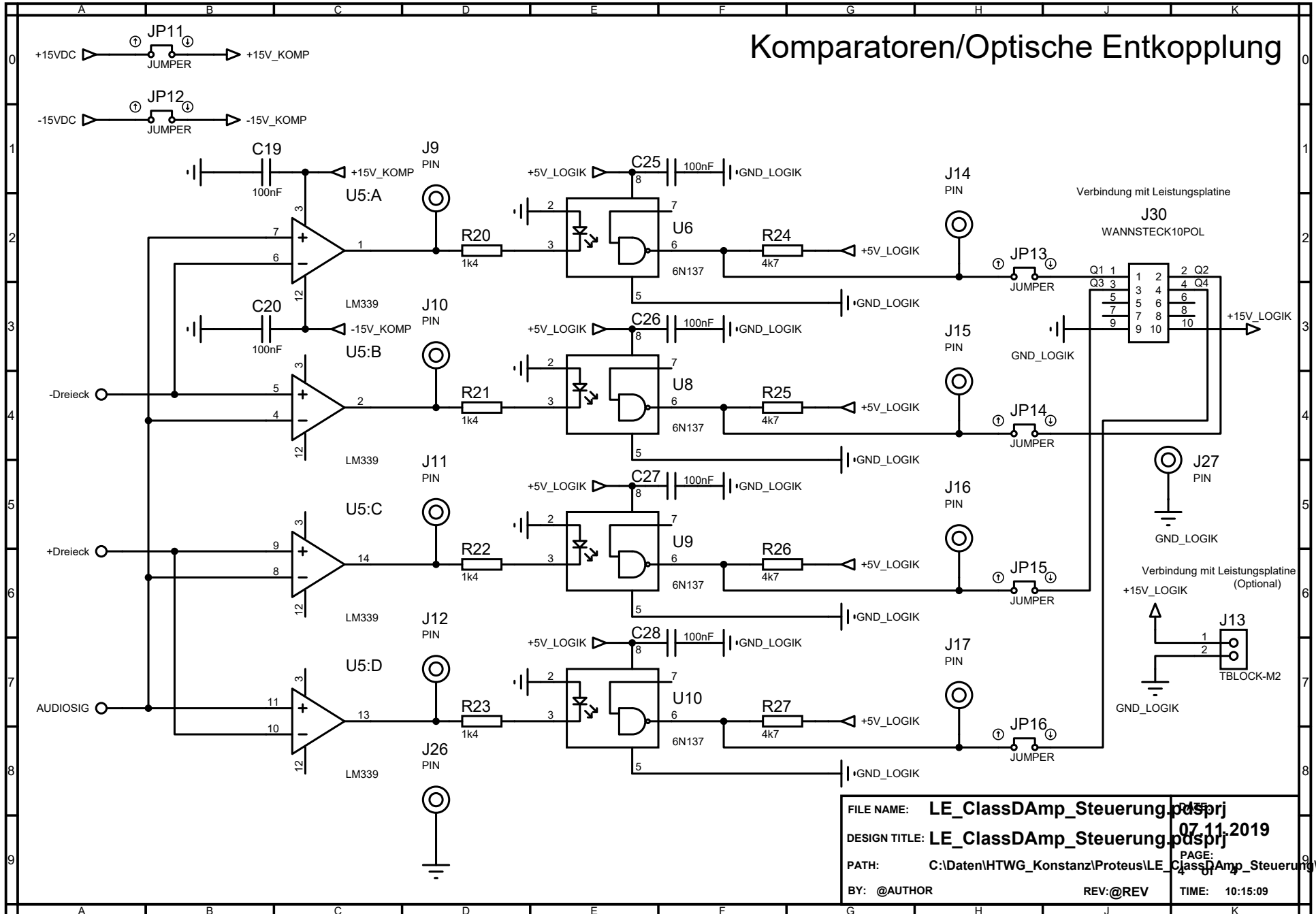
| | |
|---------------|--|
| FILE NAME: | LE_ClassDamp_Steuerung.pdsprj |
| DESIGN TITLE: | LE_ClassDamp_Steuerung.pdsprj |
| PATH: | C:\Daten\HTWG_Konstanz\Proteus\LE_ClassDamp_Steuerung\ |
| BY: | @AUTHOR |
| REV: | @REV |
| DATE: | 07.11.2019 |
| PAGE: | 2 of 1 |
| TIME: | 10:15:09 |

Audioeingang



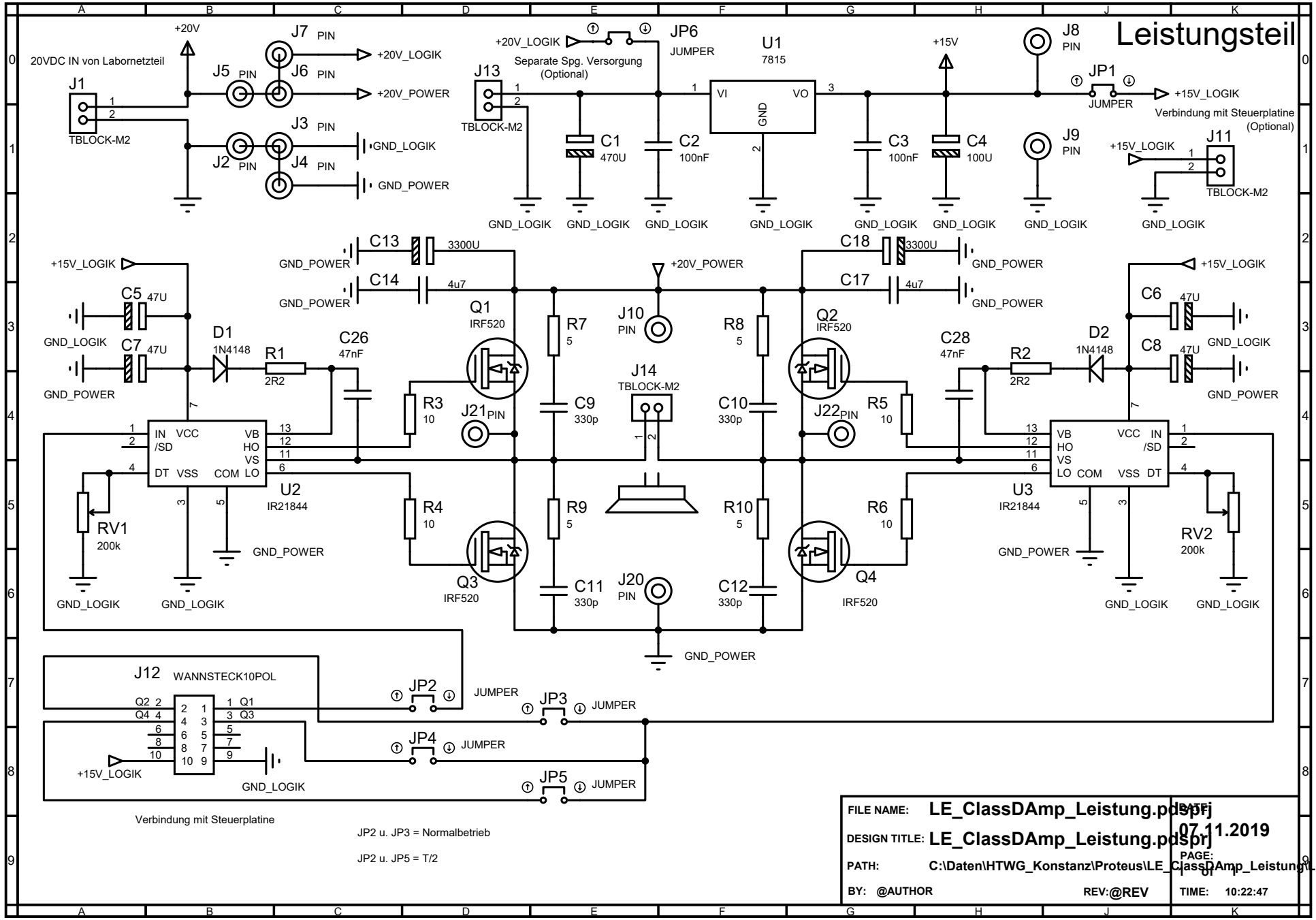
| | |
|---------------|--|
| FILE NAME: | LE_ClassDamp_Steuerung.pdsprj |
| DESIGN TITLE: | LE_ClassDamp_Steuerung.pdsprj |
| PATH: | C:\Daten\HTWG_Konstanz\Proteus\LE_ClassDamp_Steuerung\ |
| BY: | @AUTHOR |
| REV: | @REV |
| PAGE: | 07 11 2019 |
| TIME: | 10:15:09 |

Komparatoren/Optische Entkopplung



FILE NAME: **LE_ClassDamp_Steuerung.pdsprj**
 DESIGN TITLE: **LE_ClassDamp_Steuerung.pdsprj**
 PATH: **C:\Daten\HTWG_Konstanz\Proteus\LE_ClassDamp_Steuerung**
 BY: **@AUTHOR** REV: **@REV** TIME: **10:15:09**
 PAGE: **07 11 2019**
 CLASS: **LE_ClassDamp_Steuerung**

Leistungsteil



Verbindung mit Steuerplatine

JP2 u. JP3 = Normalbetrieb

JP2 u. JP5 = T/2

| | |
|---------------|---|
| FILE NAME: | LE_ClassDamp_Leistung.pdsprj |
| DESIGN TITLE: | LE_ClassDamp_Leistung.pdsprj |
| PATH: | C:\Daten\HTWG_Konstanz\Proteus\LE_ClassDamp_Leistung.pdsprj |
| BY: | @AUTHOR |
| REV: | @REV |
| DATE: | 07.11.2019 |
| PAGE: | 1 |
| TIME: | 10:22:47 |